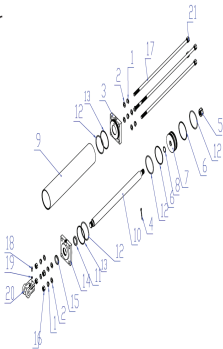


POS	QTY	PARTNUMBER	BESKRIVELSE	DESCRIPTION
1	1	414441	KLØVEPROFIL	CHASSIS
2	12	414442	STÅLBOLT MED RUNDT HOVED M12X55	BOLT M12X55
3	20	90102312	PLANSKIVE M12 FZ	FACE PLATE M12 FZ
4	12	90180954	FLANGEMØTRIK M12	COLLAR NUT M12
5	1	414443	KLØVEHOVED	CLEAVER HEAD
6	2	414444	AFSTANDSKLODS	BUSHING
7	2	414445	PLADE	PLATE
8	4	90102203	LÅSESKIVE A18	LOCKING WASHER A18
9	4	90102317	PLANSKIVE 8.8 M18 FZ	FACE PLATE M18 FZ
10	4	414446	FLANGEMØTRIK M18	COLLAR NUT M18
11	1	414447	AKSEL	SHAFT
12	3	414448	RØRSTIFT 4X40	PIPE PIN 4X40
13	1	414449	SLANGE	HOSE
14	1	414450	VENTIL	VALVE
15	1	414451	SLANGE	HOSE
16	2	414452	KUGLE	BALL
17	1	90104476	RØRSTIFT 5.0X22	PIPE PIN 5.0X22
18	3	11GBT91	SPLIT 2.0X16	COTTER 2.0X16
19	1	90104467	RØRSTIFT 5.0X20	PIPE PIN 5.0X20
20	1	414453	STUDS	NOZZLE PIPE
21	4	90102313	PLANSKIVE M14 FZ	FACE PLATE M14 FZ
22	2	414454	FORBINDELSBOLT	BOLT
23	1	414455	SLANGE	HOSE
24	1	414456	CYLINDER 2000VH	CYLINDER
25	3	90102318	PLANSKIVE M20 FZ	FACE PLATE M20 FZ
26	3	407997	SPLIT 3.0X52	COTTER 3.0X52
27	1	414457	FJEDER	SPRING
28	1	414458	TRÆK	MISCELLANEOUS
29	1	414459	SPLITBOLT MED HÅNDTAG	COTTER BOLT
30	1	414460	RAMME	FRAME
31	4	414461	FLANGEBOLT M12X40	COLLAR BOLT M12X40
32	7	T300213260	FLANGEMØTRIK M10	COLLAR NUT M10
33	6	90102199	TANDSKIVE YDRE M10	TOOTHED DISC M10
34	1	414462	STØTTEBEN	SUPPORT LEG
35	1	414463	SPLITBOLT MED HÅNDTAG	COTTER BOLT
36	1	414464	FLANGEBOLT M10X75	COLLAR BOLT M10X75
37	1	414465	SPLITBOLT MED HÅNDTAG	COTTER BOLT
38	1	414466	HÅNDTAG	HANDLE
39	1	414467	OLIETANK	OIL TANK
40	1	414468	FLANGEBOLT M12X90	COLLAR BOLT M12X90
41	2	414469	KÆDE	CHAIN
42	1	414470	STIFT	PIN
43	2	414471	FLANGEBOLT M12X80	COLLAR BOLT M12X80
44	4	292373	FLANGEBOLT MED LILLE HOVED M8X25 FZ	COLLAR BOLT M8X25 FZ
45	11	90102310	PLANSKIVE M8 FZ	FACE PLATE M8 FZ
46	12	90102198	TANDSKIVE YDRE M8 FZ	TOOTHED DISC M8 FZ
47	1	414472	PUMPE	PUMP
48	4	90122163	FLANGEBOLT 8.8 M8X55 FZ	COLLAR BOLT M8X55 FZ
49	1	90180952	FLANGEMØTRIK M8 FZ	COLLAR NUT M8 FZ

POS	QTY	PARTNUMBER	BESKRIVELSE	DESCRIPTION
50	4	414473	LEJE	BEARING
51	2	414474	HJUL KOMPLET MED FÆLG OG DÆK	WHEEL
52	2	410229	SPLIT 4.0X36	COTTER 4.0X36
53	1	TG650B	POWERLINE TG650B	ENGINE TG650B
54	1	414475	LED	JOINT
55	3	90122161	FLANGEBOLT 8.8 M8X45 FZ	COLLAR BOLT M8X45 FZ
56	1	414476	PLADE	PLATE
57	11	90180952	FLANGEMØTRIK M8 FZ	COLLAR NUT M8 FZ
58	12	90102200	TANDSKIVE YDRE M12 FZ	TOOTHED DISC M12 FZ
59	1	414477	STUDS	NOZZLE PIPE
60	1	414478	SLANGE	HOSE
61	2	860056	O-RING 16X2.4	O-RING 16X2.4
62	1	414479	STØTTEBEN	SUPPORT LEG
63	1	414480	KLO	CLAW
64	1	414481	HUS	HOUSING
65	1	414482	KLO	CLAW
66	1	414483	BØS	BUSHING
67	7	90180954	FLANGEMØTRIK M12	COLLAR NUT M12
68	2	90102312	PLANSKIVE M12 FZ	FACE PLATE M12 FZ
69	1	414484	FLITER PLADE	PLATE
70	1	414485	GUMMIDÆMPER	RUBBER MUFFLER
71	1	414486	FILTER	FILTER
72	1	414487	SKÆRM VENSTRE	GUARD
73	6	401943	FLANGEBOLT CROM M10X25	COLLAR BOLT M10X25
74	1	414488	SKÆRM HØJRE	GUARD
75	6	90122131	FLANGEBOLT 8.8 M6X20 FZ	COLLAR BOLT M6X20 FZ
76	6	90102195	FJEDERSKIVE M6 FZ	SPRING COLLAR M6 FZ
77	6	90102309	PLANSKIVE M6X16X1,5 FZ	FACE PLATE M6X16X1,5 FZ
78	2	414489	KLEMME	CLAMP
79	1	90122129	FLANGEBOLT 8.8 M6X10 FZ	COLLAR BOLT M6X10 FZ
80	1	414490	NOT	KEY
81	1	414491	NOT 5X25	KEY 5X25
82	1	414492	OLIEPROP	OIL PLUG
83	1	414493	HÅNDHJUL	KNOB
84	1	414494	SKUEGLAS	GAUGE
85	1	414495	OLIEPIND	OIL DIPSTICK
86	4	296050	PLADESKRUE MED SPIDS M5.5X16	PLATE SCREW M5.5X16
87	1	414496	DÆKSEL	LID
88	2	407449	KRONEMØTRIK M16X1.5	CASTLE NUT M16X1.5
89		414497	SKIVE	WASHER
90	4	90122152	FLANGEBOLT 8.8 M8X30 FZ	COLLAR BOLT M8X30 FZ
91	1	90100662	STÅLMØTRIK 8.8 M8 FZ	STEEL NUT M8 FZ
92	1	414498	STUDS	NOZZLE PIPE
94	1	414499	STUDS	NOZZLE PIPE
95	1	414500	LED	JOINT
96	1	90122150	FLANGEBOLT 8.8 M8X20 FZ	COLLAR BOLT M8X20 FZ
97	7	90102311	PLANSKIVE M10.X21.X5.	FACE PLATE M10.X21.X5.
98	2	90104880	SMØRENIPPEL M6	ZERK M6
99	2	414501	BØS INNER	BUSHING

POS	QTY	PARTNUMBER	BESKRIVELSE	DESCRIPTION
100	2	414502	BØS YDRE	BUSHING
101	2	414503	NAVKAPSEL	HUB CAP
102	4	90102311	PLANSKIVE M10.X21.X5.	FACE PLATE M10.X21.X5.
103	4	414504	DÆMPER	MUFFLER
104	1	414505	SPLITBOLT MED HÅNDTAG	COTTER BOLT
105	1	414506	KÆDE	CHAIN
106	6	290331	MASKINSKRUE GUL 5X12	MACHINE SCREW 5X12
107	7	90100690	LÅSEMØTRIK 8.8 M5 FZ	LOCKING NUT M5 FZ
108	1	292146	FLANGEBOLT SORT MED LILLE HOVED M5X30 FZ	COLLAR BOLT M5X30 FZ
109	1	90180951	FLANGEMØTRIK M6 FZ	COLLAR NUT M6 FZ
110	1	90102309	PLANSKIVE M6X16X1,5 FZ	FACE PLATE M6X16X1,5 FZ
111	1	414507	AKSEL	SHAFT
112	1	414508	DÆKSEL	LID
113	1	414509	PANEL FOR HÅNDTAG	PANEL
114	1	414510	DÆKSEL	LID
116	4	414511	DÆMPER	MUFFLER
117	1	422521	PAKNINGSSÆT 2000VH	SEAL SET
118	1	425067	KOMPLET HÅNDTAG	HANDLE

Cylinder for Power Split 2000 HV



POS	QTY	PARTNUMBER	BESKRIVELSE	DESCRIPTION
1	8	435749	LÅSESKIVE M8	LOCK WASHER Ø18
2	8	90102310	PLANSKIVE M8	FACE PLATE M8
3	1	435750	BAGSTYKKE	END COVER
4	1	435751	SPLITPIN 5X50	COTTER PIN 5X50
5	1	435752	MØTRIK M27X2	NUT M27X2
6	2	435753	BAGUP RING	RETAINER RING
7	1	435754	STEMPEL	PISTON
8	1	435755	O RING 30X3.55	O RING 30X3.55
9	1	435756	CYLINDER RØR	CYLINDER
10	1	435757	PISTON ROD	PISTON ROD
11	1	435758	PAKDÅSE 45X55X10	D3 SEAL 45X55X10
12	4	435755	O RING 30X3.55	O RING 30X3.55
13	2	435759	BAGUP RING	RETAINER RING
14	1	435760	FRONT COVER	FRONT COVER
15	1	435761	PAKDÅSE 45X55.5X10	DUST SEAL 45*55.5*10
16	4	435762	MØTRIK M18	HEX NUT M18
17	4	435763	BOLT	BOLT
18	1	90102911	STÅLBOLT 8.8 M8X20	STEEL BOLT M8X20
19	1	90100662	MØTRIK M8 M8	NUT M8
20	1	435764	GAFFEL ENDE	PISTON CONNECTOR
21	4	435765	MØTRIK SPECIEL M18	THICKER HEX NUT M18